



instrutel



*Rapid Field Deploy
Industrial Systems*

- » Easy to use
- » Easy to deploy
- » Easy to maintain

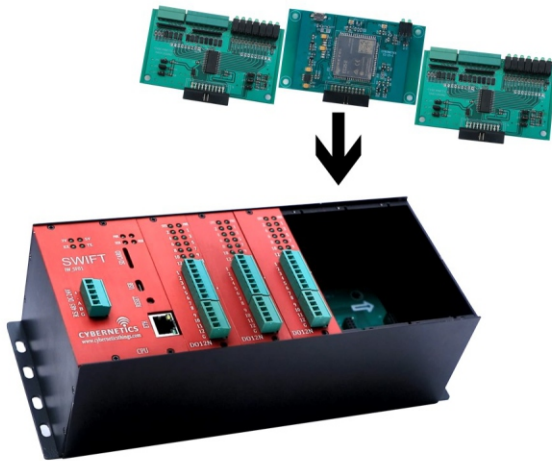
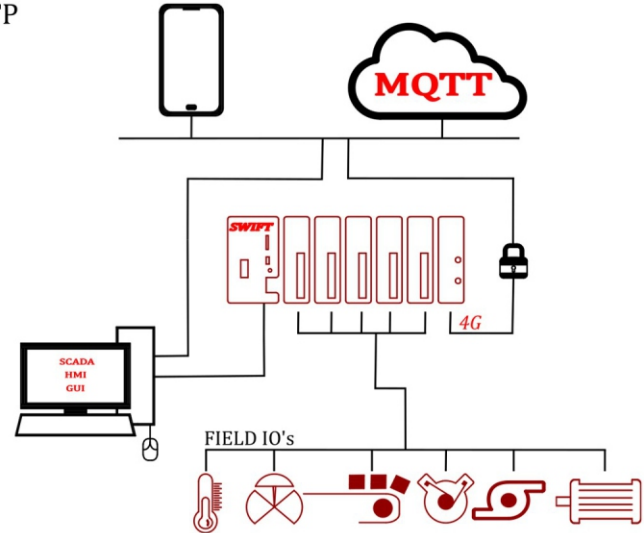
SWIFT

IW_SF01



Software Modules Support

- 1) Protocols support on ethernet : Http, Telnet, UDP, MQTT, MODBUS
- 2) Protocols support on GSM: FTP, SMS, MQTT, HTTP
- 3) Protocols support on 485: MODBUS
- 4) Storage: File storage SD card upto 4GB
- 5) USB: Device data transfer

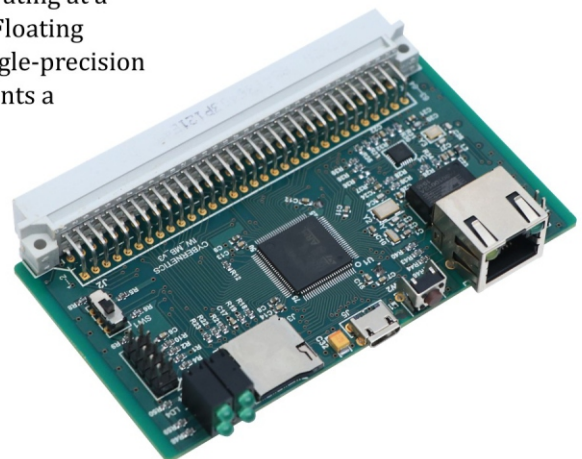


- * Highly Modular
- * Configure system for your requirements
- * Wide range of IO modules

CPU Module

Specs

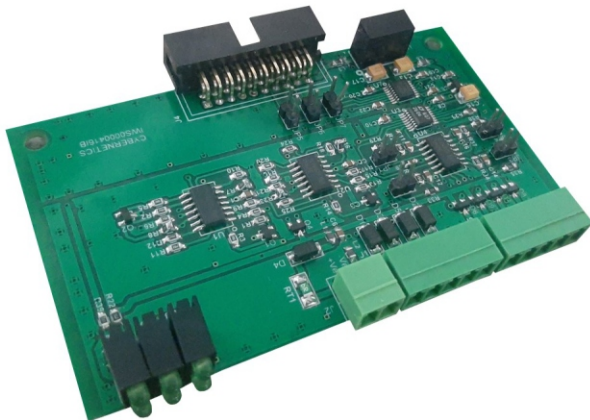
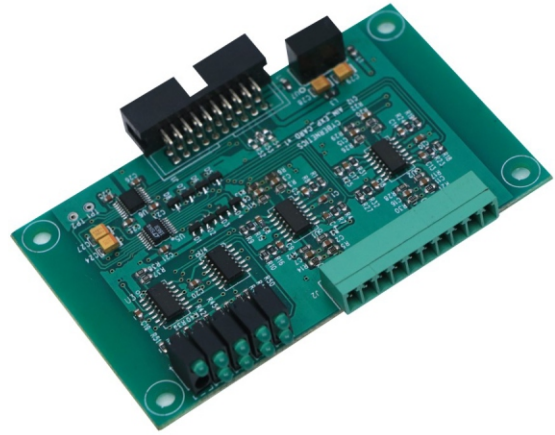
- 1) High-performance Arm® Cortex®-M4 32-bit RISC core operating at a frequency of up to 168 MHz. The Cortex-M4 core features a Floating point unit (FPU) single precision which supports all Arm single-precision data-processing instructions and data types. It also implements a full set of DSP instructions and a memory protection unit (MPU) which enhances application security.
- 2) 10/100 Ethernet
- 3) 4GB SD Card
- 4) USB
- 5) Power 5 Watt @ 3.3V



ADC Module (IWA0800N1)

Specs

- 1) Number of Channels 8.
- 2) 4-20mA / 0 to 10V Input
- 3) Card Level Isolation 1.5KV
- 4) Maximum sampling rate 50ksps/channel
- 5) 16 Bit ADC
- 6) Status led for Card to CPU communication
- 7) Field signal indication for current inputs



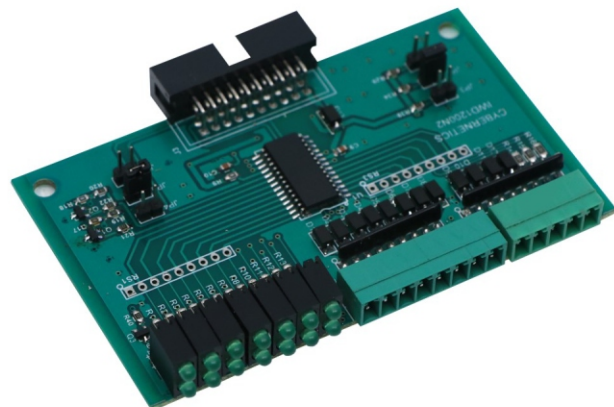
DAC Module

Specs

- 1) Number of Channels 4.
- 2) 4-20mA / 0 to 5V Output
- 3) Card Level Isolation 1.5KV
- 4) Maximum Output rate 1000Samples/channel
- 5) 16 Bit DAC
- 6) Status led for Card to CPU communication
- 7) Field signal indication for current inputs

Power Supply & 485 Communication

- 1) 230V AC input, 15 Watt
- 2) Isolated 485 Interface, Baudrates from 2.4kbps to 115200kbps



Digital Input Module (IWD1200N2)

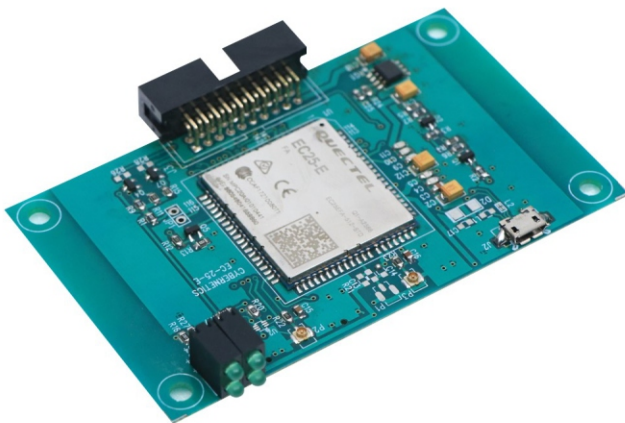
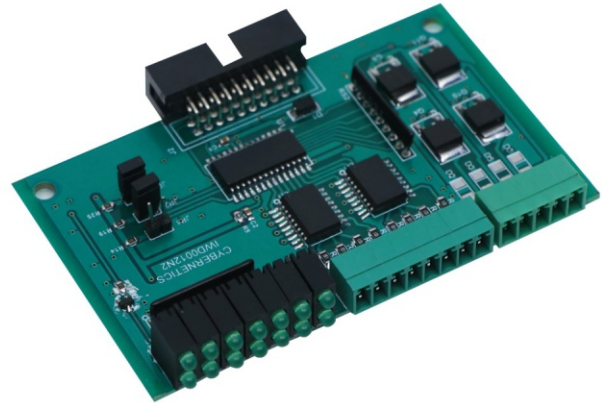
Specs

- 1) Number of Channels 12.
- 2) High Switching/ Gnd Switching Inputs
- 3) Card Level Isolation 1.5KV
- 4) Inputs High 5V
- 5) Maximum inputs level 24V
- 6) Status Led for each Input
- 7) Card Status indication with CPU.

Digital Output Module (IWD0012N2)

Specs

- 1) Number of Channels 12.
- 2) Sourcing/ Sinking Outputs
- 3) Card Level Isolation 1.5KV
- 4) Output High maximum 24V
- 5) Status Led for each Output
- 6) Card Status indication with CPU.

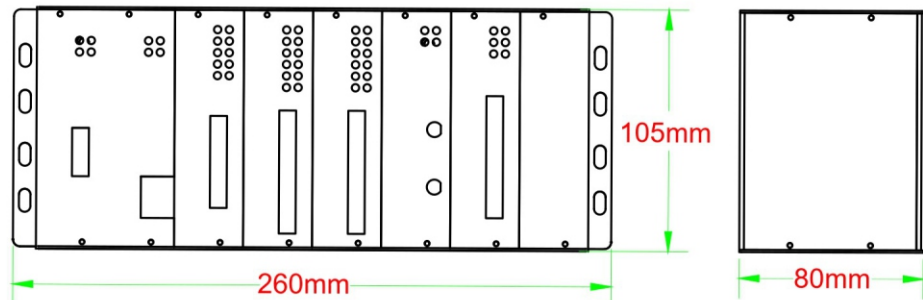


4G (LTE) Module (IWC0100N1)

- » Max 85.6 kbps(DL)
- » LTE version 3GPP E-UTRA Release
- » 10 Bandwidth 1.4/3/5/10/20 MHz
- » Supply voltage 3.3V ~ 4.3V, 3.8V Typ
- » GSM health status LED indication
- » Network mode (2G/4G) status LED indication

Chassis

- 1) HS30 Aluminium with 20micron Electro plating
- 2) Dimensions L(260)X W(105)X H(80)
- 3) Card guide for each slot upto 6 slots



IO Configurations

<i>IO Configurations</i>						
IO CARD	Slot 1	Slots2	Slot 3	Slot 4	Slot 5	Slot 6
<i>DIGITAL INPUT</i>	●	●	●	●	●	●
<i>DIGITAL OUTPUT</i>	●	●	●	●	●	●
<i>ANALOG INPUT (4-20)</i>	●	●	●	●	●	●
<i>ANALOG OUTPUT (DAC)</i>	●	●	●	●	●	●
<i>ANALOG INPUT (RTD)</i>	●	●	●	●	●	●
<i>PWM</i>		●		●		
<i>4G</i>				●		

Applications

Industry 4.0 Applications



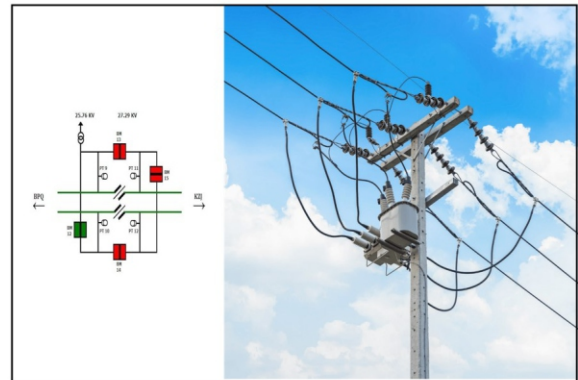
Building Management Application



Process Automation



Railway Application



Simulators



INSTRUTEL
5-5-35/71/2, Prashanti Nagar,
Kukatpally, Prashanthi Nagar,
Hyderabad, Telangana - 500072.

Phone :- +91-9989822468
+91-8519902565
mail :- info@instrutel.com
Web :- www.instrutel.com